

WORKTITUDE FOR LIGHT

#Worktitude for wellbeing
#Worktitude for life
#Worktitude for innovation



Worktitude for light

Lamp is work and attitude, we are Worktitude for Light.

We inspire, we innovate, we craft, and we bring your technical lighting dreams to life! For half a century, Lamp has steadfastly upheld its core mission: to create vibrant and tailored solutions that conquer every lighting challenge our clients face, seamlessly fitting into architectural wonders across the globe.



Working for light that works

Lamp is work and attitude, we are Worktitude for Light.

Light is our DNA



For over fifty remarkable years, we've turned our clients' lighting challenges into breathtaking realities! Through a seamless blend of seasoned expertise and relentless innovation, we bring brilliance to every aspect of our work, from design to consultation.

Team



Our team of skilled engineers, designers, technicians, and talented professionals collaborate seamlessly on each project, bringing dynamic synergy to your vision!

International vision, local commitment



We've expanded our reach to over 70 countries, thanks to our central factory and headquarters in Terrassa, as well as our network of 8 vibrant subsidiaries.

Co-creation



At Lamp, we ignite your project with exceptional value by crafting lighting solutions that perfectly match any application!



Worktitude for Wellbeing

We understand lighting as a fundamental **element for improving people's well-being**, analysing the **visual and non-visual effects of light**.

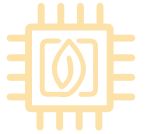
We believe that light is born in each luminaire, but lives in the space it illuminates and in the person who works or lives there. Whether it is a product, a service or a project, we build on and for the users, taking into account the physical characteristics of the space and the tasks that will be carried out in it.



Visual comfort



Photobiological risk



Technological Gradient



Worktitude for Life

We encourage projects that have a **positive impact on the environment and promote a more sustainable lighting industry**.

We believe that bringing a space to life requires the shared effort of many companies and professionals working responsibly with the **aim of reducing the environmental impact along the entire value chain**. We do our bit by providing realistic, efficient, sustainable solutions that are in line with the current climate reality.



Sustainability Committee



Public Commitment and Transparency



Reducing Environmental Footprint



Waste Management



Ecodesign



Worktitude for Innovation

We promote and adopt innovation projects aimed at constant improvement in a transversal way, understanding that innovation is a **systemic and systematic process**.

We anticipate the needs of architects, lighting designers, engineers and interior designers to make their projects a reality and give light to the future, **creating lighting solutions that respond to new ways of living**.



Innovation Committee



Research & Development



Industry Partnerships



Tüb 60

Your go-to for visually comfortable indoor lighting! This luminaire brings direct and direct-indirect illumination, offering flexibility with suspended mounting or a sleek recessed appearance. Elevate ambiance with Opal and Opal Comfort diffused lens options for enhanced UGR ratings. Standard 90 CRI, various Kelvin temperatures, and three lengths make it perfect for retail, modern offices, and more. Customize your space with multiple finish options that coordinate seamlessly with other Lamp luminaires. Illuminate with style and comfort!



NEW

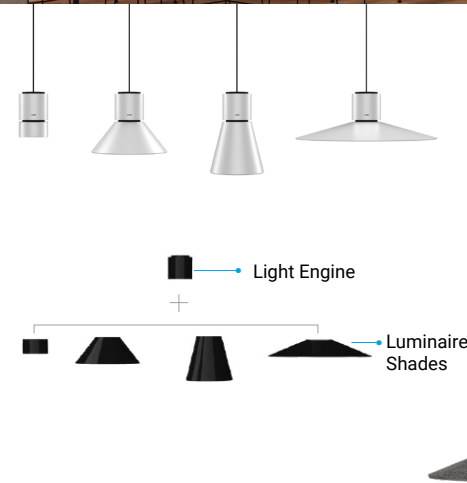


INTERIOR APPLICATIONS



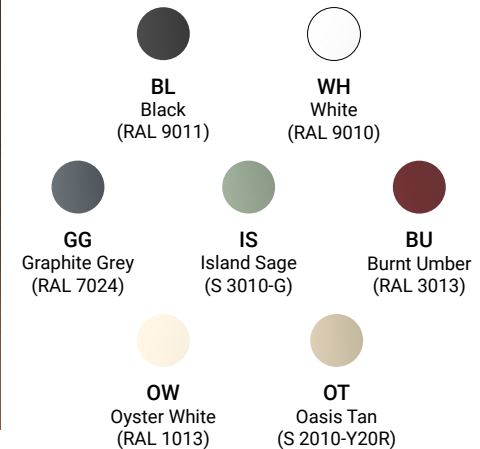
Stormbell 80

Unleashes creative design potential through a wide range of shade styles, materials, finishes, and visual enhancers such as a glow ring to accent smaller, more intimate spaces for that "right at home" feeling.



PT
14.3" Shallow Conical Shade - PET Felt

CK
14.3" Shallow Conical Shade - Cork



NEW



Fil 45

Introducing FIL 45 Series: a versatile suspended luminaire for indoor spaces, offering various lengths, lumen outputs, CCT, and driver options. With an elegant design and opal diffused lens, it provides both direct and direct-indirect illumination. Explore the Wellbeing variant for a prestigious, low-emission solution optimized for circadian rhythms, featuring a 97 CRI. Elevate your space with style and wellness in one.



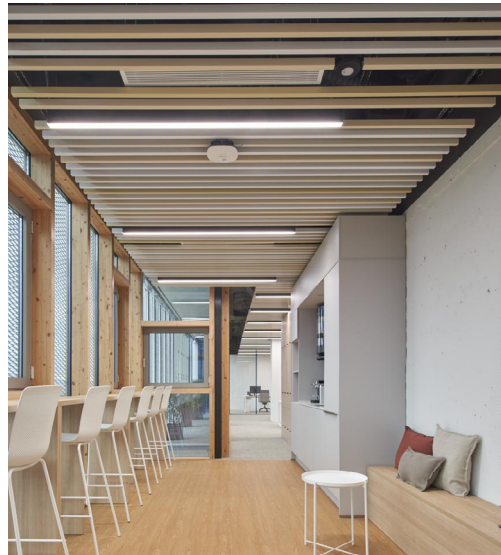
Fil 45
Opal & Opal Comfort
Direct Linear Luminaire



Fil 45
Opal & Opal Comfort
Direct-Indirect Linear Luminaire



Fil 45
Wellbeing
Direct Linear Luminaire

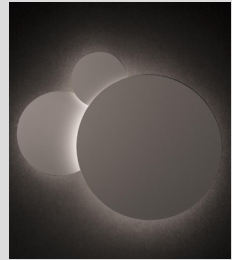


INTERIOR APPLICATIONS



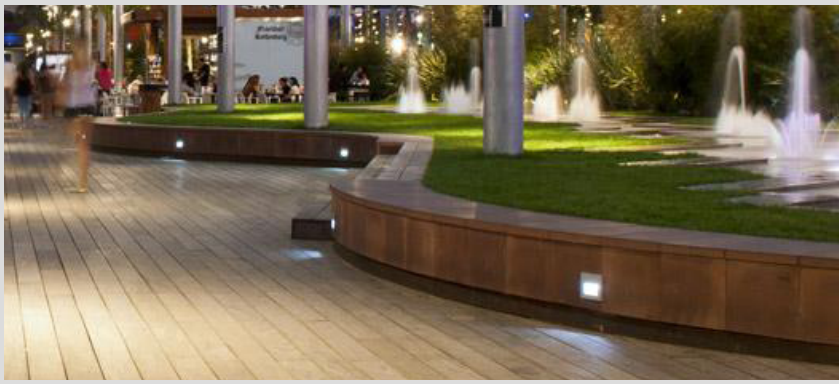
Mun Dark

Contemporary indirect lighting luminaire providing a "splash" of light on the surface behind.



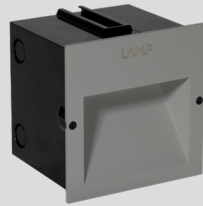
Hance

Unobtrusive styled architectural spotlight delivering performance and aesthetics.



Urban

Step into the world of sophisticated outdoor lighting with the URBAN 100, a stunning 4" square recessed wall floodlight. Designed to illuminate and accentuate pedestrian spaces, including stairs, walkways, entrances, and corridors, this luminaire is a masterpiece of both form and function.



Shot

Looking to add a touch of brilliance to your outdoor spaces? Look no further than the SHOT family of outdoor floodlights. These four versatile models are perfect for lighting up architectural elements, sculptures, public squares, and pedestrian-friendly streets.

- Transform outdoor spaces with powerful illumination.
- Customize lighting with various lumen packages, color temperatures, and control choices.
- Easily adjust lighting angles with the versatile mounting yoke.



EXTERIOR APPLICATIONS



B Side Bollard

Join us on a lighting adventure with the B-Side family of bollards. These aren't your ordinary bollards; they're a trio of stylish luminaires designed to add a dash of sophistication to both public and private spaces. Get ready to discover their illuminating secrets:

- **Double the Glow:** B-Side's bidirectional light distribution adds a touch of elegance.
- **Stylish Design:** Crafted from premium die-cast and extruded aluminum, these bollards are both functional and a work of art.
- **Hidden Magic:** Concealed light sources create a captivating self-illumination effect, adding charm to any space.
- **Built to Last:** With an IP65 rating and IK10 impact rating, B-Side is your go-to for lighting public areas.
- **Versatile Beauty:** The smallest model can also be mounted on walls, giving you more lighting possibilities.



Lamp receives a Silver rating in the EcoVadis Evaluation

Three years after first receiving the classification, Lamp has once again been recognized by EcoVadis, placing us in the top 25% of companies with the best performance in sustainability and corporate social responsibility (CSR).

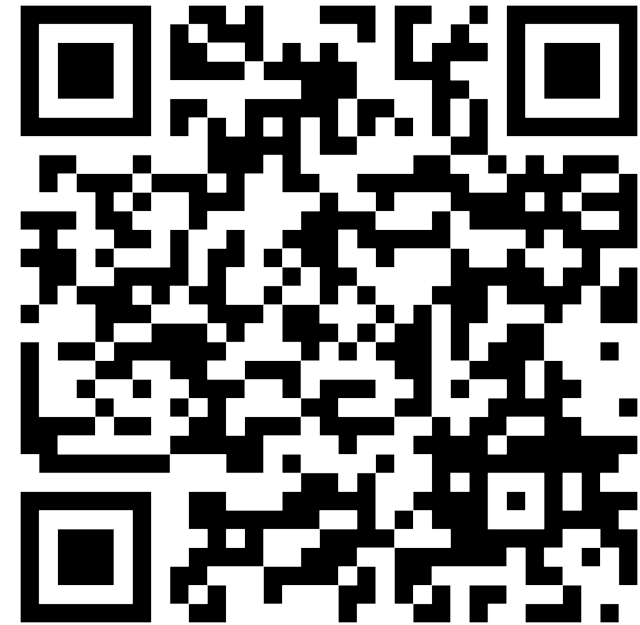
Reflecting our ongoing and strong commitment to sustainability and social responsibility, we at Lamp have renewed our Silver rating for another year. This recognition, awarded for the third consecutive year since the first concession in 2021, is accompanied by an improvement of 4 points in the Scorecard compared to the 2022 assessment, with notable progress in environmental and human rights practices.

EcoVadis is considered one of the most reliable and comprehensive corporate sustainability rankings in the world, ranking around 100,000 companies in more than 160 countries.

All the actions and progress we are making at Lamp in terms of sustainability, from a triple impact perspective, are a reflection of the continuous improvement carried out within the framework of our strategic line "Worktitude For Life"



Want to see more from all our Brands?



EXPERIENCE[®]

BRANDS

.hess | GRIVEN  | SCHMITZ | LAMP | NORDEON  | WILA |  PANTHEON | Vulkan



LAMP HEADQUARTERS

Córdoba 16, 08226,
Terrassa Barcelona, SPAIN
Tel. +34 937 366 800
lamp@lamp.es
www.lamp.es

LAMP NORTH AMERICA

427 Hyatt Street, Gaffney
29341 SC, USA
Tel. 864-487-3535
info@lampnorthamerica.com
www.lampnorthamerica.com