

SHOT 290

Outdoor Floodlight



DESCRIPTION

SHOT 290 is one model in a family of four outdoor floodlights of varying sizes and outputs. It is suitable for illumination of architectural elements such as facades or sculptures and areas such as public squares and similar area lighting applications including streets in pedestrian-oriented settings. The floodlight features a mounting yoke for vertical and horizontal adjustability.

SHOT 290 features a choice of three light distributions in 3000K, 3500K, or 4000K color temperatures. Available distributions are rotationally symmetric Spot (12°) or Medium Flood (22°) beams or an asymmetric street distribution. Control options include 0-10V Dimming or On/Off.



Date: _____ Type: _____ Catalog Number: _____

Project Name: _____

ORDERING INFORMATION

LUMINAIRE						
MODEL	OUTPUT	CCT	CONTROL	VOLTAGE	OPTIC	FINISH
SHT290 Shot 290	SO Standard Output	30K 3000K	ON-OFF On/Off	UNV 120-277v	SP Spot 12°	AG Anthracite Grey
		35K 3500K	DIM 0-10v Dimming		MB Medium 22°	GR Grey
		40K 4000K			ST Street	CC Custom RAL Color

Custom options are available; consult factory via phone at (864) 487-3535 ext. 258 or via email at DesignServices@EXP-Brands.com.

See Page 6 for ordering information of available accessories.



Shot 80



Shot 180



Shot 290



Shot 380

SHOT 290

Outdoor Floodlight



		SHOT 290
PHYSICAL	HOUSING	Die-Cast Aluminum
	LENS	Tempered Glass
	HARDWARE	Stainless Steel
	MOUNTING	Surface or Pole Mount (See Page 6 for available mounting accessories.)
	DRIVER LOCATION	Integral
	DIMENSIONS	9.3" L x 11.4" W x 16.7" H
	WEIGHT	19 Pounds
	OPERATING TEMPERATURE	-4°F to 104°F (-20°C to 40°C)
	EPA	0.929 ft ²

ELECTRICAL	POWER CONSUMPTION	48 Watts
	CURRENT	0.40 amps at 120 volts 0.17 amps at 277 volts
	VOLTAGE	120 to 277 Volts
	CONTROL	On/Off, 0-10v Dimming
	FREQUENCY	50 to 60 Hz

PHOTOMETRIC	LED	Static White 3000K, 3500K, or 4000K
	DISTRIBUTIONS	12°, 22°, Street Distribution
	LUMEN MAINTENANCE	L80 > 60,000 Hours at 77°F*
	CRI	80 CRI
	BUG RATING	B0-U0-G0
	LIGHT CONTROL ACCESSORIES	Visor Available

LIGHT DISTRIBUTIONS	DISTRIBUTION	BEAM ANGLE	3000K			4000K		
			LUMENS	EFFICACY	MAX. CANDELA	LUMENS	EFFICACY	MAX. CANDELA
Values based on full output.	SPOT	12°	4011	83.6	40510	4223	88	44651
	MEDIUM	22°	4068	84.8	17115	4282	89.2	18016
	STREET	-	4179	87.1	3187	4400	91.7	3356

CERTIFICATIONS	SAFETY	CSA Certification
	INGRESS PROTECTION	IP65
	IMPACT RATING	IK08
	WARRANTY	Five Year Limited Warranty

* LED life may vary under actual field conditions due to external factors. Lifetime estimates are generated from actual testing in a controlled environment. Values are conservatively derived from those numbers.

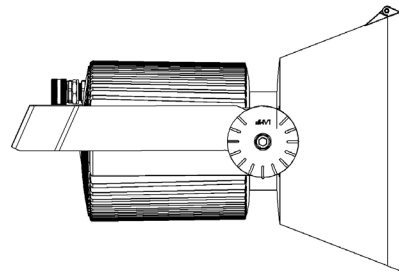
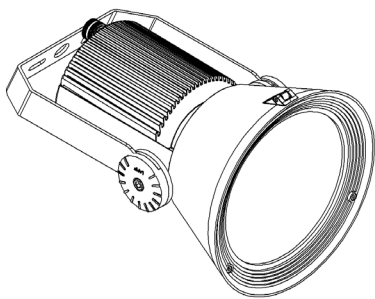
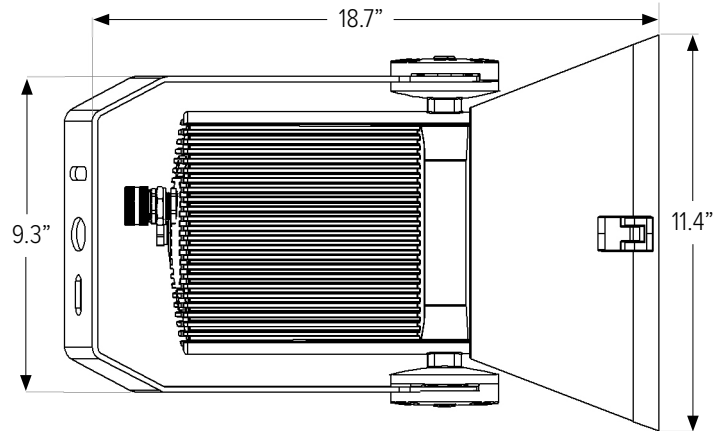
SHOT 290

Outdoor Floodlight



DIMENSIONS

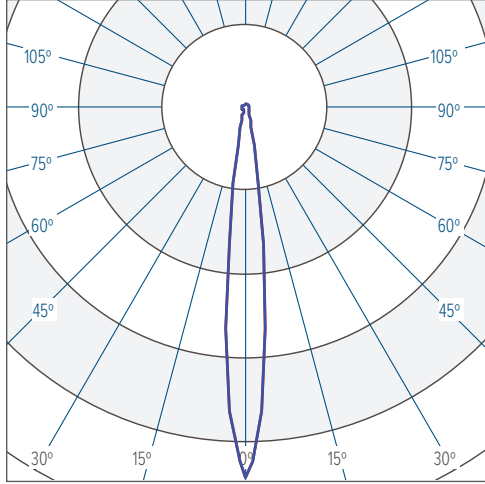
All dimensions are shown in inches unless otherwise noted.



PHOTOMETRICS

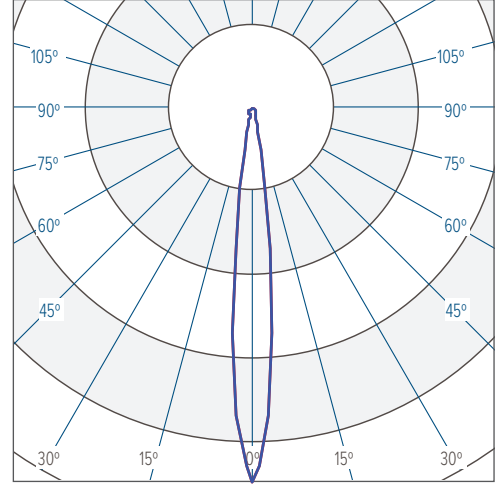
SPOT 12° 3000K
CBCP 40510 @ 4011 lumens

Horizontal
Vertical



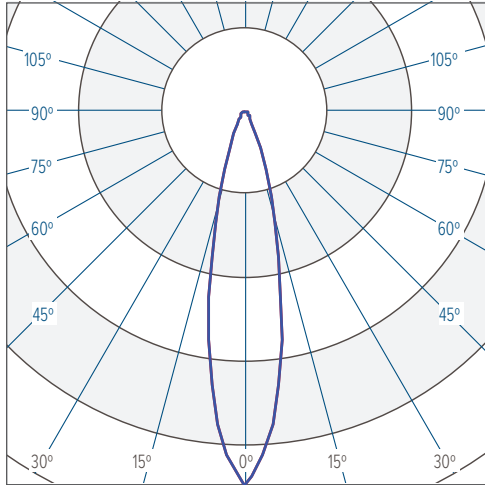
SPOT 12° 4000K
CBCP 42851 @ 4223 lumens

Horizontal
Vertical



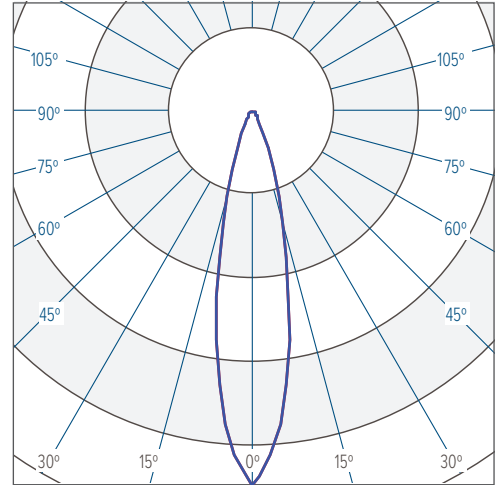
MEDIUM 22° 3000K
CBCP 17115 @ 4068 lumens

Horizontal
Vertical



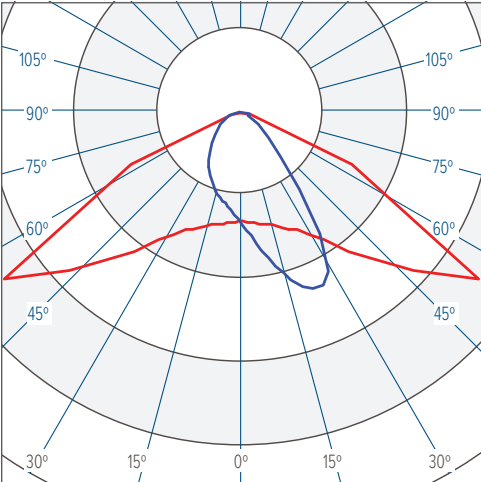
MEDIUM 22° 4000K
CBCP 18015 @ 4282 lumens

Horizontal
Vertical

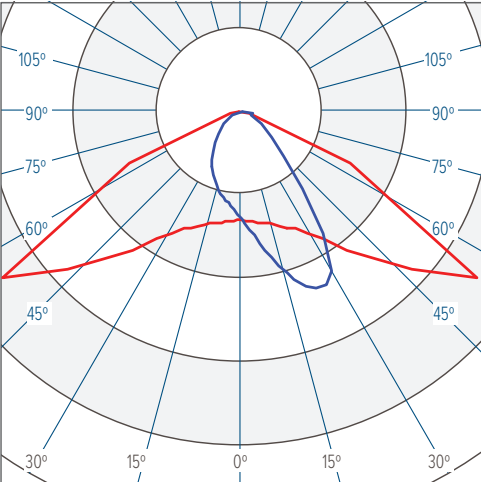


PHOTOMETRICS

STREET DISTRIBUTION 3000K
CBCP 3187 @ 4179 lumens



STREET DISTRIBUTION 4000K
CBCP 3356 @ 4400 lumens



MOUNTING ACCESSORIES

-XX* indicates a painted accessory. Select "AG" for Anthracite or "GR" for Grey. Custom RAL colors are available on request.

POST-TOP MOUNTING

SHORT MOUNTING BRACKET

SINGLE LUMINAIRE MOUNTING



SHT-SHRT-TOP-1LUM-2.36IN-XX*

Shot 180/290/380 Short Pole Top Mount
Single Luminaire
Fits ø2.36" Tenon
Anthracite or Grey Finish

SHT-SHRT-TOP-1LUM-3IN-XX*

Shot 180/290/380 Short Pole Top Mount
Single Luminaire
Fits ø3" Tenon
Anthracite or Grey Finish

.....



SHT-LNG-TOP-1LUM-2.36IN-XX*

Shot 180/290/380 Long Pole Top Mount
Single Luminaire
Fits ø2.36" Tenon
Anthracite or Grey Finish

SHT-LNG-TOP-1LUM-3IN-XX*

Shot 180/290/380 Long Pole Top Mount
Single Luminaire
Fits ø3" Tenon
Anthracite or Grey Finish

LONG MOUNTING BRACKET

TWIN LUMINAIRE MOUNTING



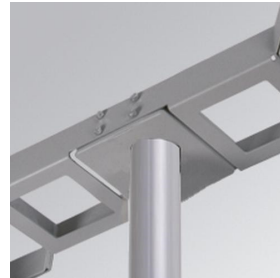
SHT-SHRT-TOP-2LUM-2.36IN-XX*

Shot 180/290/380 Short Pole Top Mount
Twin Luminaires
Fits ø2.36" Tenon
Anthracite or Grey Finish

SHT-SHRT-TOP-2LUM-3IN-XX*

Shot 180/290/380 Short Pole Top Mount
Twin Luminaires
Fits ø3" Tenon
Anthracite or Grey Finish

.....



SHT-LNG-TOP-2LUM-2.36IN-XX*

Shot 180/290/380 Long Pole Top Mount
Twin Luminaires
Fits ø2.36" Tenon
Anthracite or Grey Finish

SHT-LNG-TOP-2LUM-3IN-XX*

Shot 180/290/380 Long Pole Top Mount
Twin Luminaires
Fits ø3" Tenon
Anthracite or Grey Finish

.....

Installation instructions available on request.

MOUNTING ACCESSORIES

-XX* indicates a painted accessory. Select "AG" for Anthracite or "GR" for Grey. Custom RAL colors are available on request.

INTERMEDIATE POLE MOUNTING



SHT-SHRT-INT-1LUM-4.72IN-XX*
Shot 180/290/380 Short Intermediate Pole Mount
Single Luminaire
Fits ø3.15" to 4.72" Pole
Anthracite or Grey Finish

.....

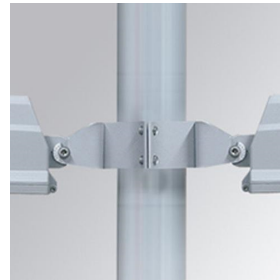


SHT-SHRT-INT-1LUM-5.31IN-XX*
Shot 180/290/380 Short Intermediate Pole Mount
Single Luminaire
Fits ø2.36" to 5.31" Pole
Anthracite or Grey Finish

.....



SHT-LNG-INT-1LUM-4.72IN-XX*
Shot 180/290/380 Long Intermediate Pole Mount
Single Luminaire
Fits ø3.15" to 4.72" Pole
Anthracite or Grey Finish



SHT-SHRT-INT-1LUM-5.12IN-XX*
Shot 180/290/380 Intermediate Pole Mount
Single Luminaire
Fits ø4.72" to 5.12" Pole
Anthracite or Grey Finish

SHT-SHRT-INT-2LUM-5.12IN-XX*
Shot 180/290/380 Intermediate Pole Mount
Twin Luminaires
Fits ø4.72" to 5.12" Pole
Anthracite or Grey Finish

.....

Installation instructions available on request.

MOUNTING ACCESSORIES

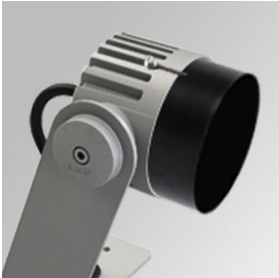
-XX* indicates a painted accessory. Select "AG" for Anthracite or "GR" for Grey. Custom RAL colors are available on request.

WALL MOUNTING



SHT-WALL-1LUM-XX*
Shot 180/290/380 Wall Mount
Single Luminaires
Anthracite or Grey Finish

OPTICAL ACCESSORIES



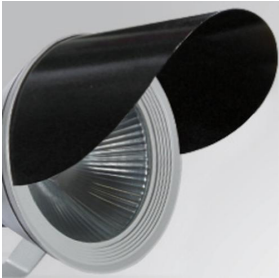
SHT80-SNOOT
Snoot for Shot 80
Matte Black Finish

.....

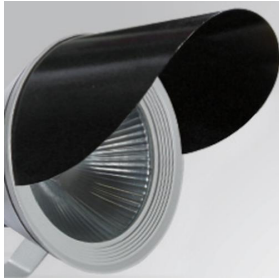


SHT180-SNOOT
Snoot for Shot 180
Matte Black Finish

.....



SHT290-VISOR
Visor for Shot 290
Matte Black Finish



SHT380-VISOR
Visor for Shot 380
Matte Black Finish

.....

Installation instructions available on request.